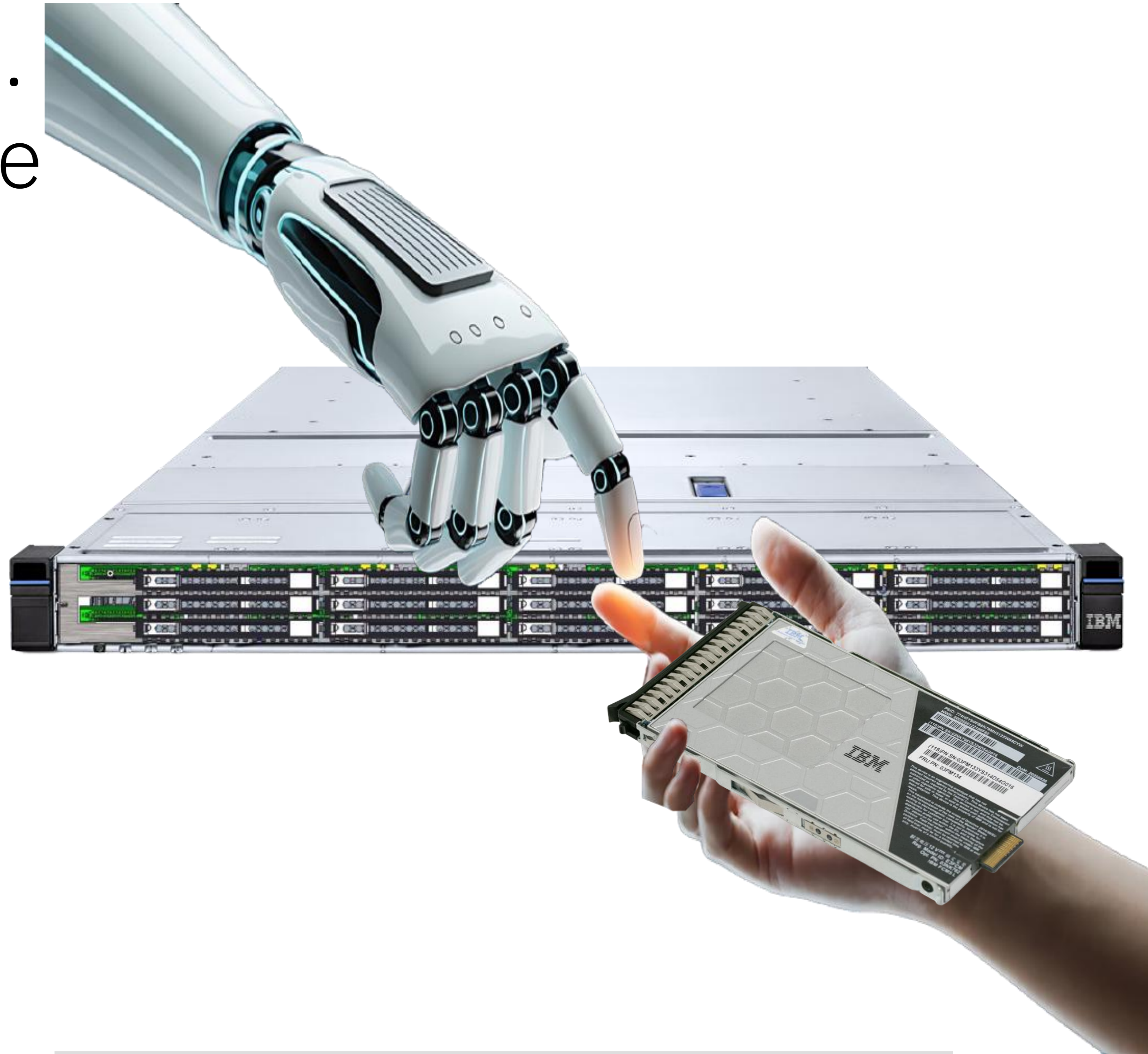
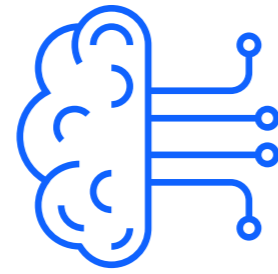


FlashSystem 5600...
introduces the future
of storage today!



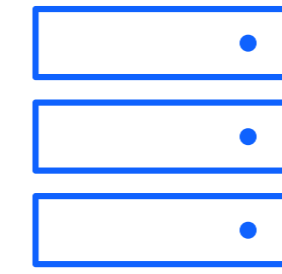
February 2026 launch of new IBM FlashSystem .ai and new FlashSystem hardware



FlashSystem.ai

Self-managing storage
powered by AI

- Amplify human expertise with IBM trained AI agents.
- Zero-click operations accelerate tasks, increasing admin productivity and minimizing risk.
- Manage, optimize and secure storage using natural-language interactions, turning intent into action with Agentic AI.



Next-Gen Hardware

Industry-leading density
and efficiency

- Deliver consistent, high performance for mission-critical workloads with fifth-generation FlashCore Modules, providing up to 105TB per module.
- Slash data center footprint and power consumption by at least half with a next-gen hardware platform offering up to 6× denser storage.
- No compromises data reduction and threat detection with IBM-exclusive computational storage.



Operational Resiliency

Business continuity without
compromise

- Detect attacks in seconds and recover fast using embedded AI; IBM-unique drive-level threat detection; and immutable Safeguarded Copies.
- Agentic AI detects resiliency gaps and identifies remediation delivering operational resiliency and minimizing downtime, data loss, and business risk.
- Achieve nonstop operations and peace of mind through advanced data resiliency and non-disruptive data mobility.

Summary

Key product deliverables

FlashSystem 1Q26 launch

IBM FlashSystem.ai

FlashSystem.ai

Self-managing storage powered by AI

- For 1Q'26 customers will be able to provision volumes by a request on natural language.
- Runs on-premises and leverages IBM watsonx for AI-driven orchestration on cloud.
- Radical simplicity: Ask, approve, and go.



Next-Gen Hardware

Industry-leading density and efficiency

- Controllers delivering up to 7 times more capacity than competitors
- Systems that pack 12 drives in just 1U.
- Ultra density for market leading TCO. Footprint, Energy consumption, and Performance.



FlashCore Modules

Intelligent density in the new EDSFF form factor

- Announcing the 5th generation
- New form factor with enhanced data reduction with hardware-assisted deduplication
- Significantly increased capacity which provides more density on each drive.

New IBM FlashSystem 5600



FlashSystem 5600

Protocol:	NVMe
Rack Units and Slots	1U with 12 slots ¹
CPU info:	2x12 core Ice Lake D
PCIe info:	Gen 4
Max FC HBA ports	16-32G / 12-64G FC ports
Max Ethernet HBA ports	16 25GbE ports
Max IOPS:	2.6M
Max Read Bandwidth:	30 GB/s
Max Bandwidth per drive	1.83 GB/s per drive
Capacity in...	Capacity in 1U
Usable / Effective	400TBu / 2.4PBe
Achieved with:	FCM 5E XL



FlashSystem 7600

Protocol:	NVMe
Rack Units and Slots	2U with 32 slots ²
CPU info:	2x16 core AMD Epyc
PCIe info:	Gen 5
Max FC HBA ports	32-32G / 24-64G FC ports
Max Ethernet HBA ports	32 25GbE ports
Max IOPS:	4.3M
Max Read Bandwidth:	55 GB/s
Max Bandwidth per drive	1.87GB/s per drive
Capacity in...	Capacity in 2U
Usable / Effective	1.1PBu / 7.29PBe
Achieved with:	FCM 5E XL

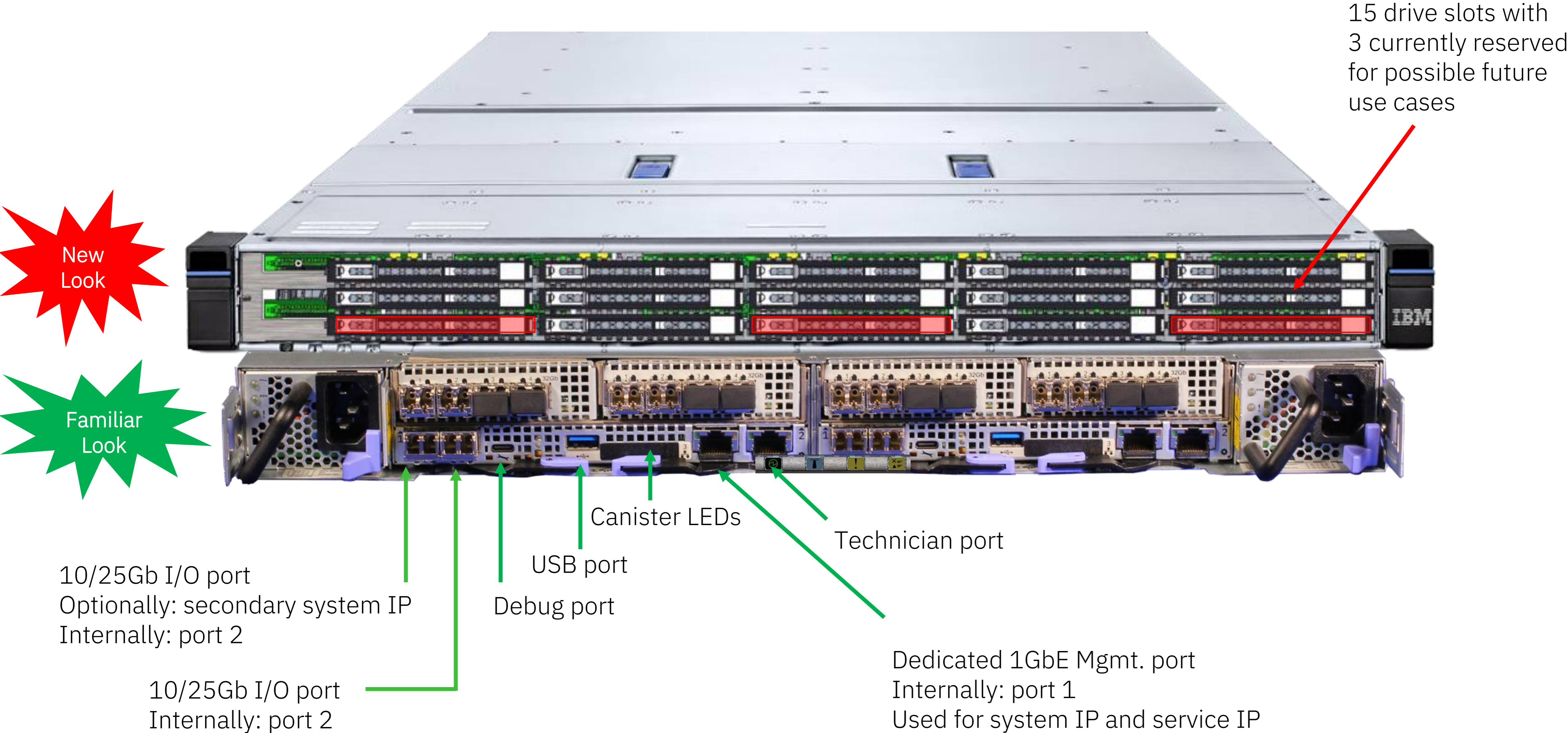


FlashSystem 9600

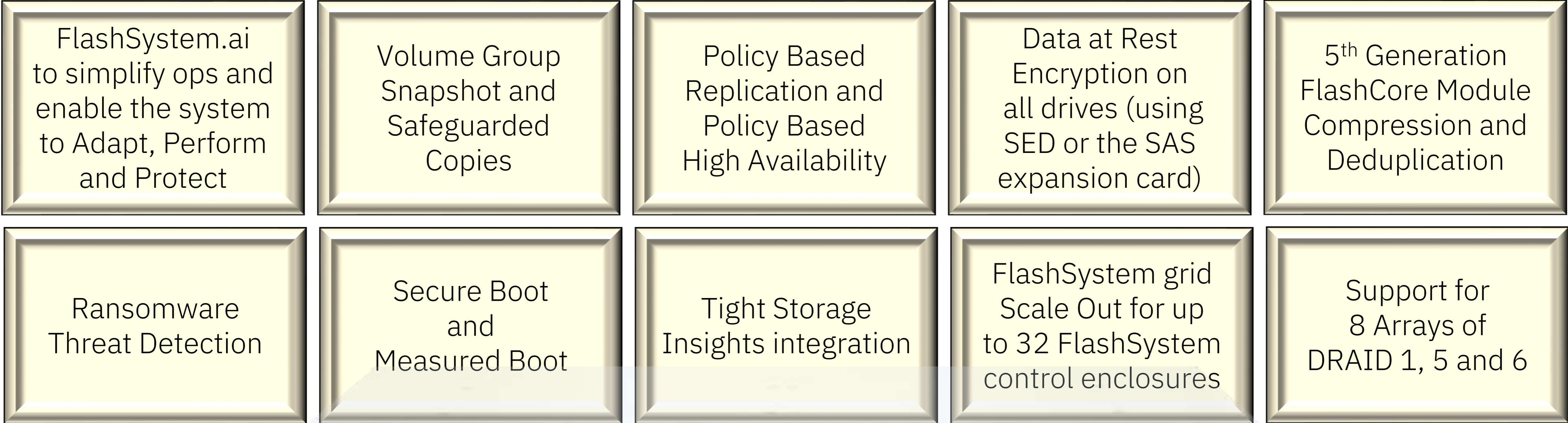
Protocol:	NVMe
Rack Units and Slots	2U with 32 slots ²
CPU info:	2x48 core AMD Epyc
PCIe info:	Gen 5
Max FC HBA ports	32-32G / 24-64G FC ports
Max Ethernet HBA ports	32 25GbE ports
Max IOPS:	6.37M
Max Read Bandwidth:	86 GB/s
Max Bandwidth per drive	2.68GB/s per drive
Capacity in...	Capacity in 2U
Usable / Effective	2.3PBu / 11.88PBe
Achieved with:	FCM 5E XXL

Protocol:	
Rack Units and Slots	
CPU info:	
PCIe info:	
Max FC HBA ports	
Max Ethernet HBA ports	
Max IOPS:	
Max Read Bandwidth:	
Max Bandwidth per drive	
Capacity in...	
Usable / Effective	
Achieved with:	

FlashSystem 5600 is a combination of new and familiar



FlashSystem 5600 software details



FlashSystem 5600 drive details



SAS Expansion, with
2 SAS chains for...
Up to 4 5U92
or
Up to 6 2U12

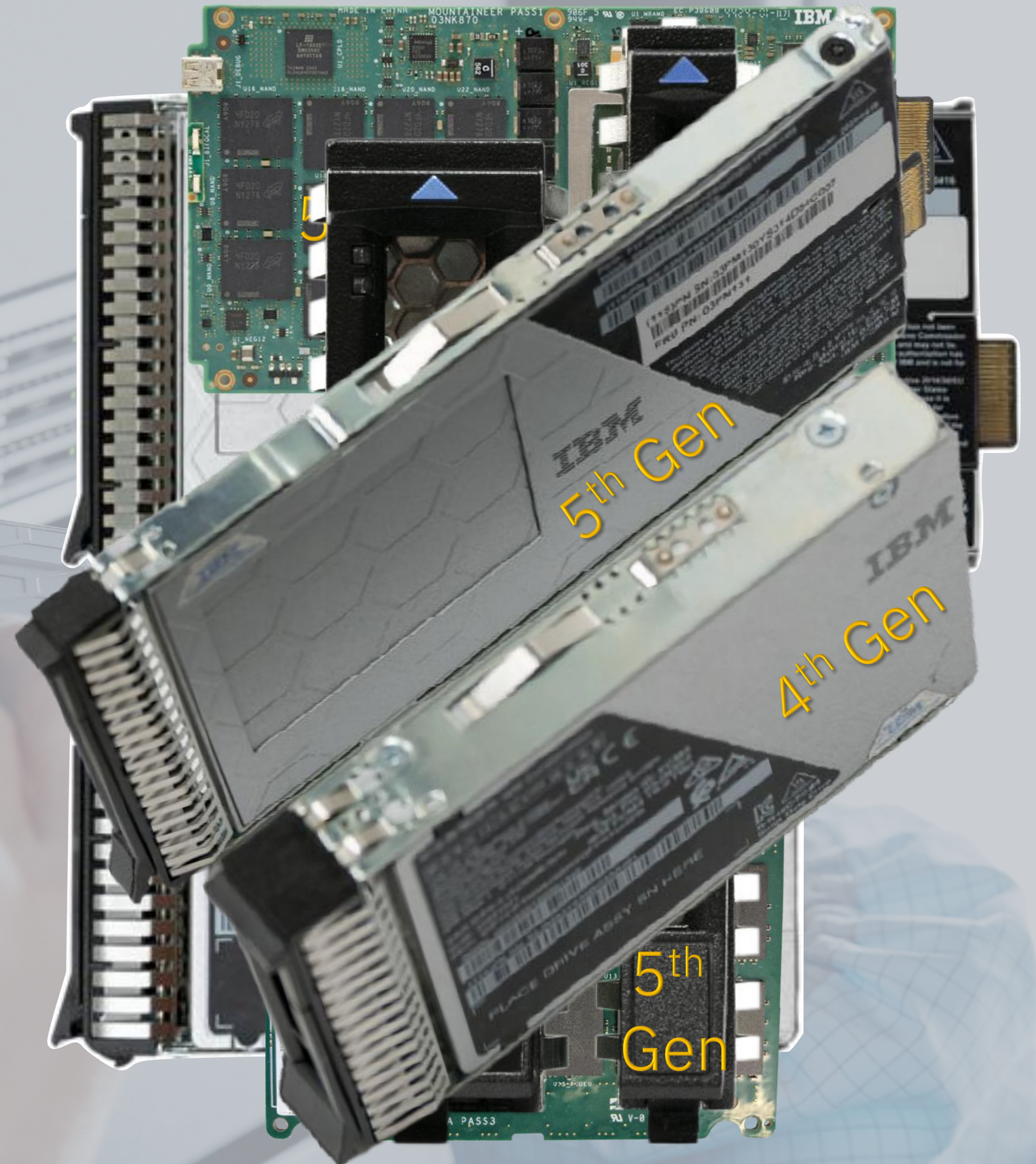
NL-SAS drive support
for the following
7200RPM capacities...
8 TB
16TB
24TB

NVMe Support for up to
12 commodity Industry
Standard SSDs...
1.9TB
3.84TB
7.68TB

5th Generation
FlashCore Modules



5th Gen FlashCore Module versus 4th Gen FlashCore Module



5th generation FlashCore Modules

- Increased raw capacity
- Increased logical capacity
- Increased performance
- Increased computational offload
- Increased security
- Increased data reduction



Capacity Points in TB	Small	Medium	Large	XL	2XL
Form Factor	1T	1T	1T	1T	1T
Raw Capacity	6.6TB	13.2TB	26.4TB	52.8TB	105.6TB
Useable Capacity (1:1)	5.6TB	11.2TB	22.4TB	44.8TB	89.6TB
Max Data Reduction	6:1	6:1	6:1	6:1	4.88:1 ¹
Logical Capacity	33.6TB	67.2TB	134.4TB	268.8TB	438.0TB ¹
Platform Support	x600	x600	x600	x600	9600 ²